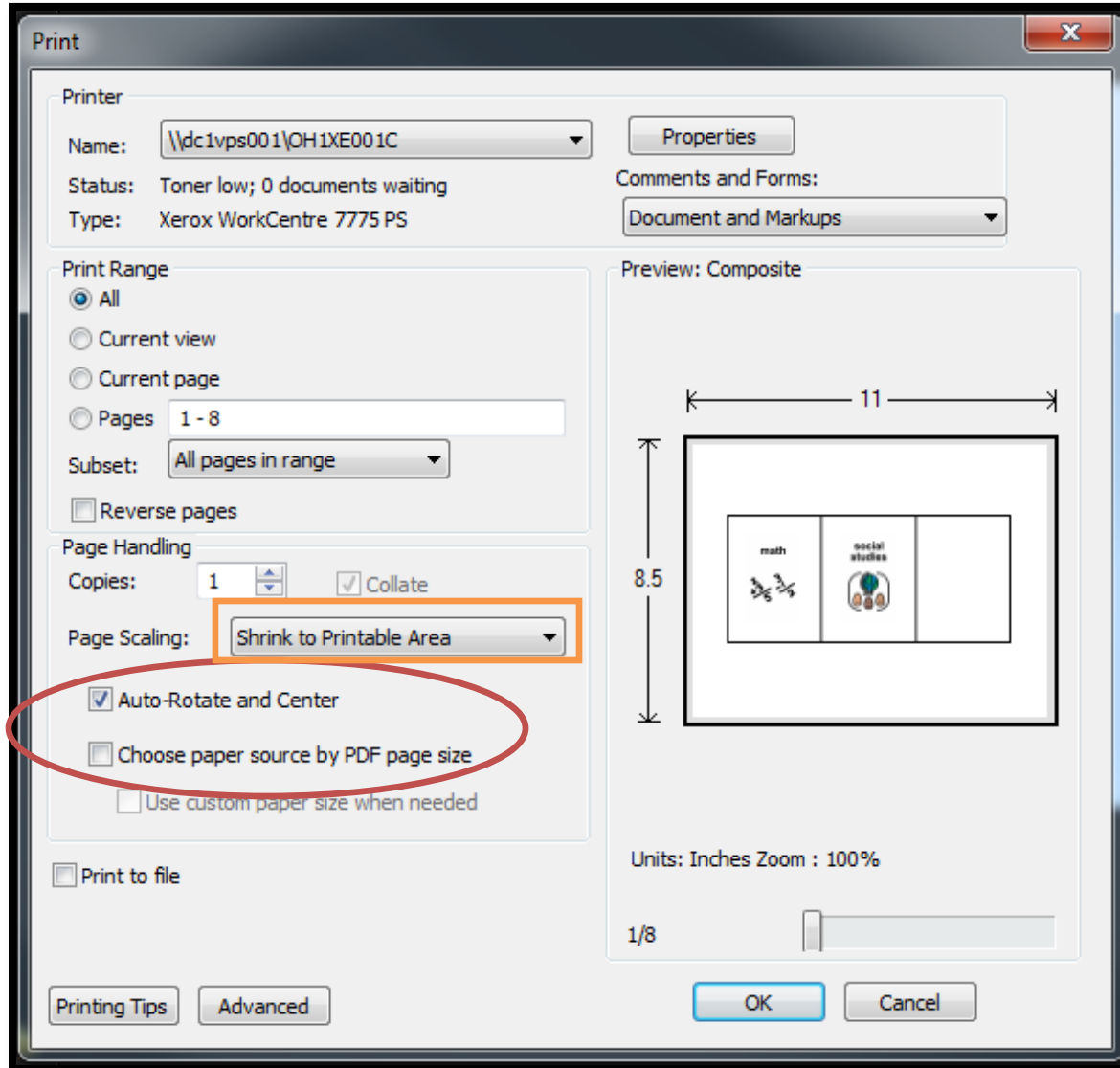
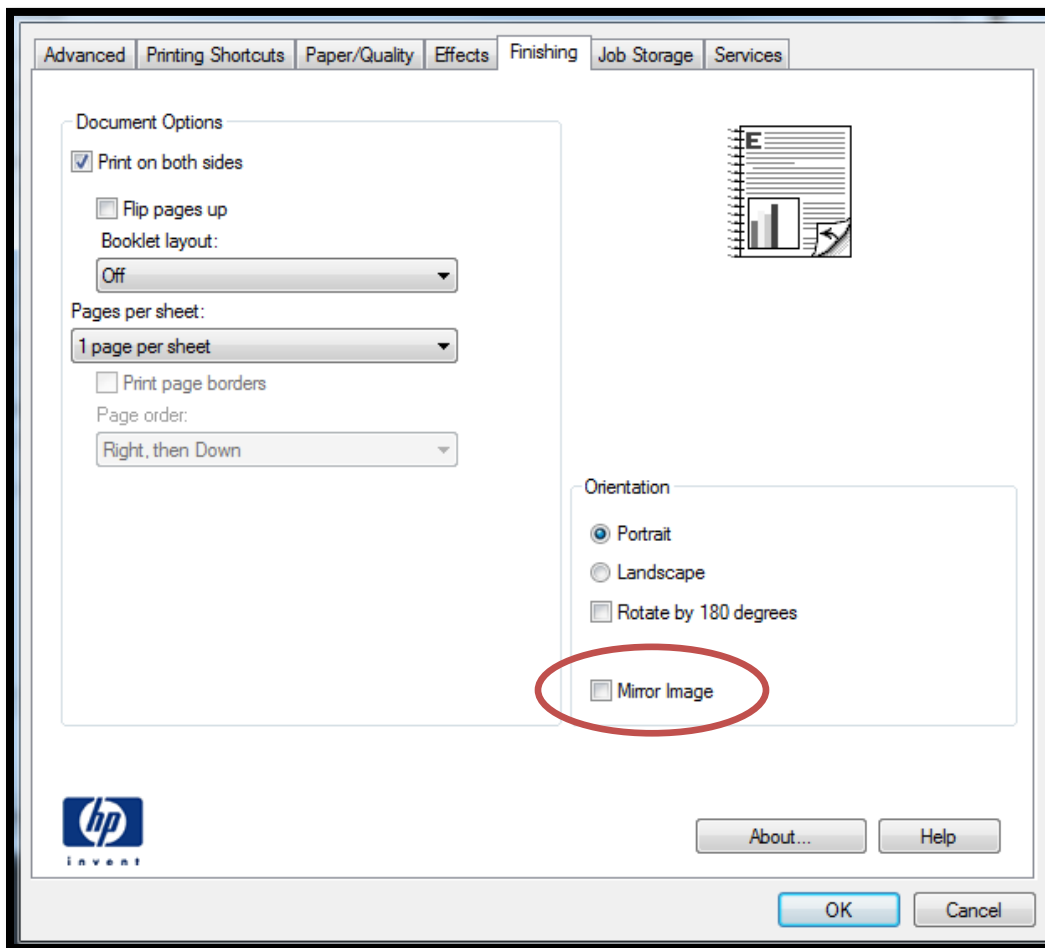
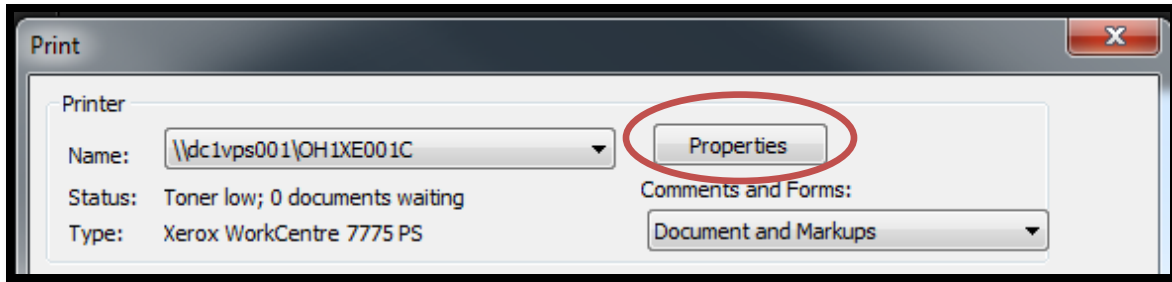


## Directions for Printing AASCD Sample Cards

When printing the AASCD sample cards, select “Shrink to Printable Area” in the Page Scaling drop-down box. Next, select “Auto-Rotate and Center.” Then de-select the “Choose paper source by PDF page size” box if it was already checked. These steps should produce the print preview screen displayed below.

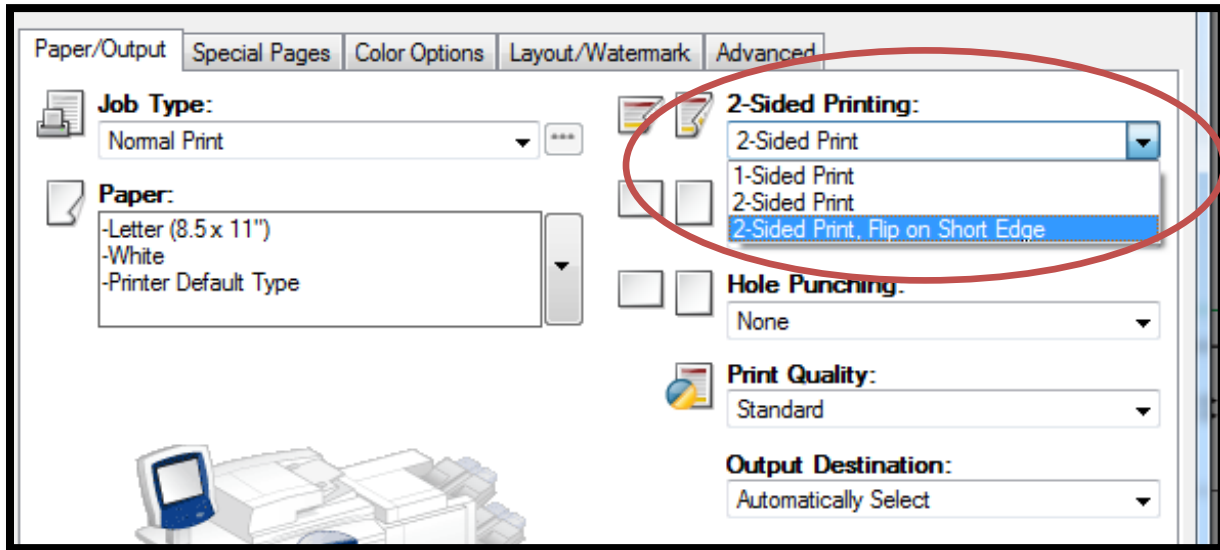


In addition, open your printer properties and deselect “Mirror Image” if you find that it has been auto-selected for you. These simple steps should enable you to print the cards with ease.



## Directions for Printing AASCD Sample Strips

To print sample strips such as the *Equivalent Expressions* strips, set your printer properties to “2-Sided Print, Flip on Short Edge.” For some printers, this setting may be called “Flip pages up.” In addition, be sure your computer has selected 8.5 x 11” paper. These simple steps should enable you to print all AASCD sample strips correctly.



OR

