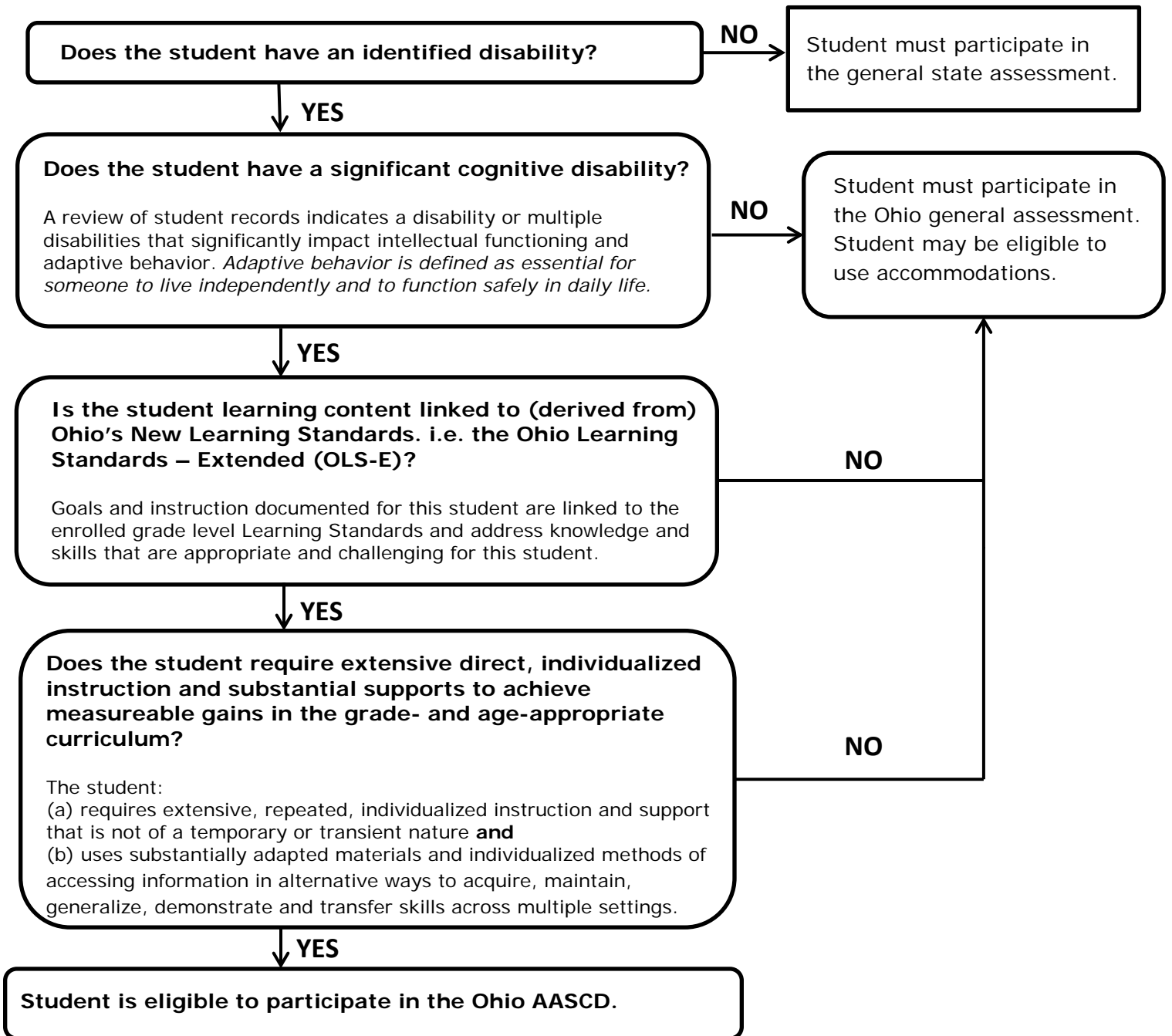


# Ohio AASCD Decision Making Flow Chart

The student is eligible to participate in the Alternate Assessment for Students with Significant Cognitive Disabilities (AASCD) if all responses below are YES.



In addition, evidence for the decision for participating in the AASCD is **Not Based** on:

<ol style="list-style-type: none"> <li>1. A disability category or label</li> <li>2. Poor attendance or extended absences</li> <li>3. Native language/social/cultural or economic difference</li> <li>4. Expected poor performance on the general education assessment</li> <li>5. Academic and other services student receives</li> <li>6. Educational environment or instructional setting</li> <li>7. Percent of time receiving special education</li> </ol>	<ol style="list-style-type: none"> <li>8. English Learner (EL) status</li> <li>9. Low reading level/achievement level</li> <li>10. Anticipated disruptive behavior</li> <li>11. Impact of student scores on accountability system</li> <li>12. Administrator decision</li> <li>13. Anticipated emotional duress</li> <li>14. Need for accommodations (e.g., assistive technology/AAC) to participate in assessment process</li> </ol>
---	---